

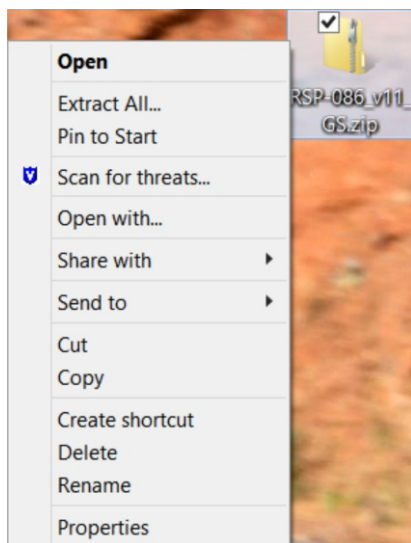


Xpres Technical Services

# How to install the Roland Cut Studio Software & Plug-In for Corel Draw

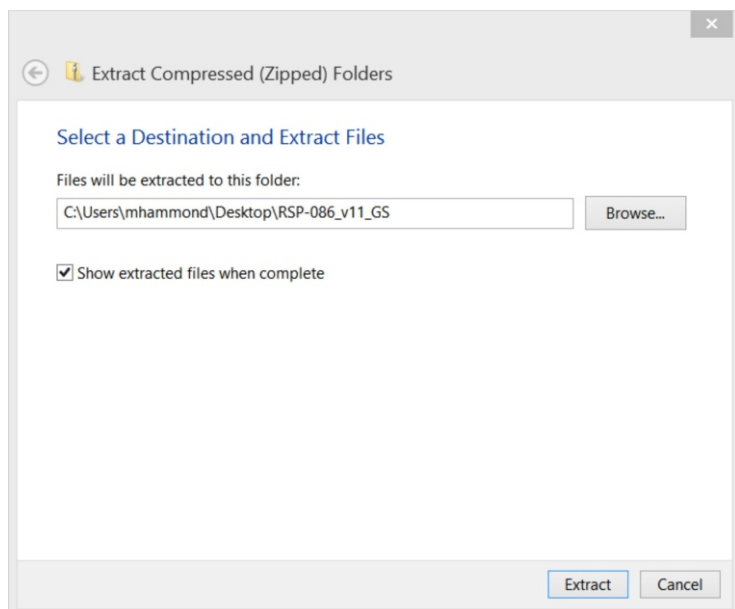
1. Download the Cut Studio Plug-In files from Roland's website:

[http://startup.rolanddg.com/software\\_license/gsoft\\_en.html](http://startup.rolanddg.com/software_license/gsoft_en.html)



2. Find the downloaded zip folder and place it onto your desktop. It usually looks like the file shown left, although a variety of appearances are possible depending on your operating system.

3. Right click the zip folder and select **Extract All...**



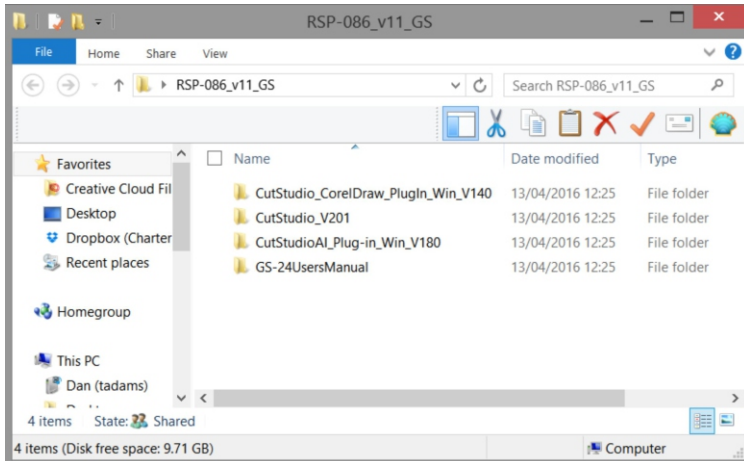
4. Choose a destination folder to extract the contents inside of. Do this by clicking **Browse** and finding the desired folder. Ideally, this folder should be empty.

**Note:** you might have to create a new folder before attempting point 4, if a spare is not available to use.



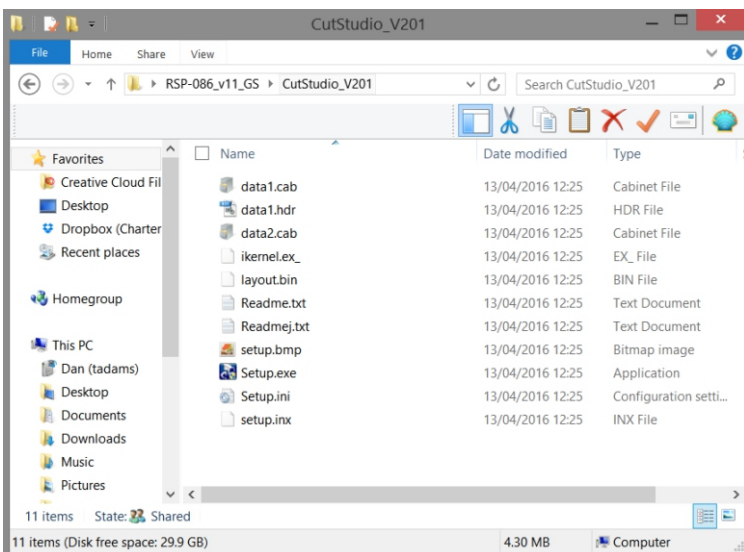
## Xpres Technical Services

# How to install the Roland Cut Studio Software & Plug-In for Corel Draw



5. Open the folder into which you extracted the contents. You should see some further folders contained within, as shown in this screen-shot.

6. Double click on the **CutStudio\_V201** folder.



7. Double click on the **Setup.exe** file to launch the installer. Follow through the on-screen prompts until the installation has finished.

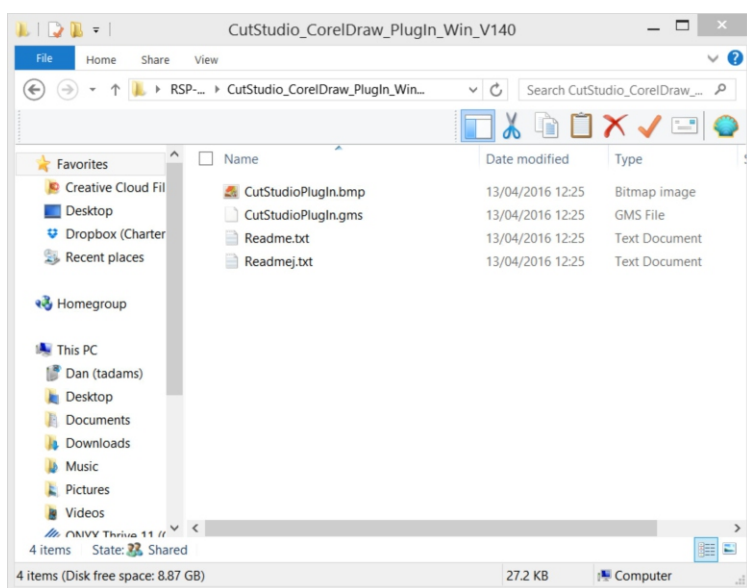
8. If the Cut Studio program opens upon installation, close it before continuing.



Xpres Technical Services

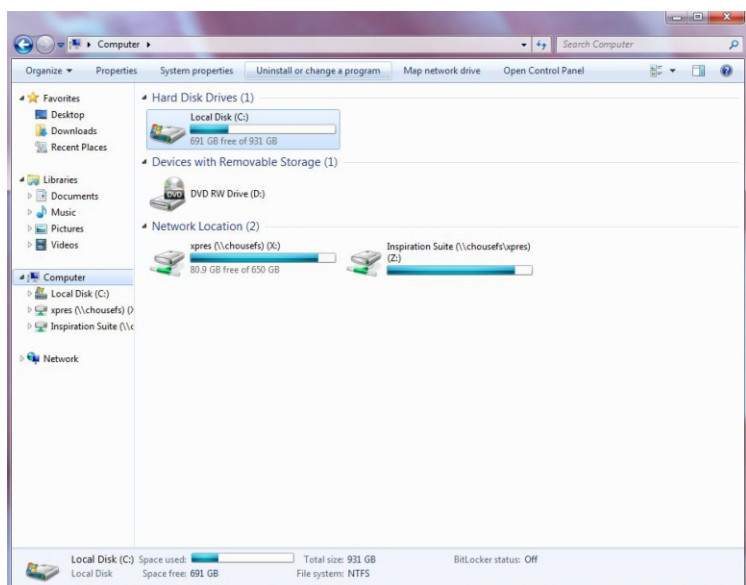
# How to install the Roland Cut Studio Software & Plug-In for Corel Draw

9. Return to the previous folder, as described in point 5. This time, double click on the **CutStudio\_CorelDraw\_Plugin\_Win-V140** folder.



10. When this folder is opened, copy (Ctrl+C) the files named **CutStudioPlugin.bmp** and **CutStudioPlugin.gms**

11. Click on the Start Menu and select **My Computer** (or similarly titled option). Windows 8 and 10 users can instead click on the **File Explorer** icon.



12. A page similar to this should open. Double click on the C Drive icon.



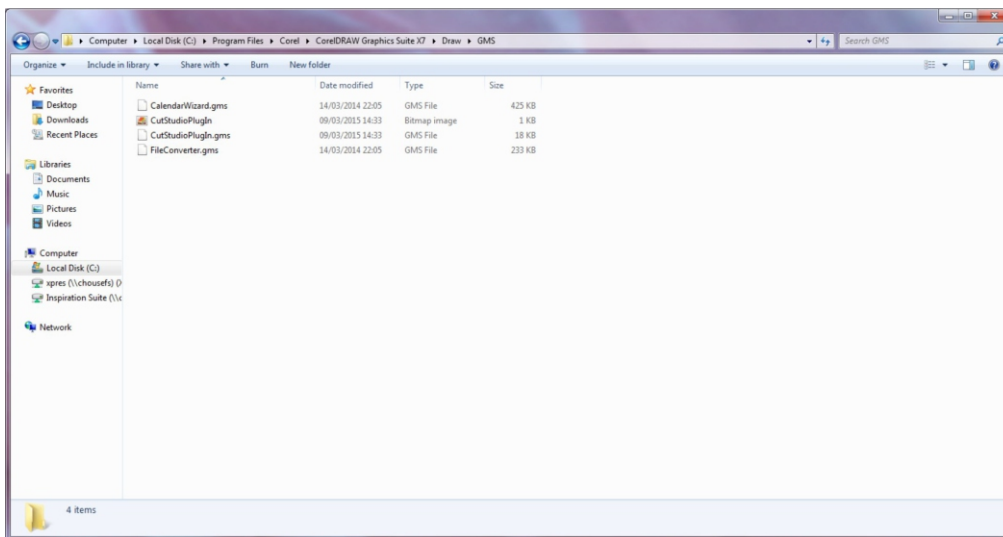
## Xpres Technical Services

# How to install the Roland Cut Studio Software & Plug-In for Corel Draw

13. When the C Drive has been opened, select these folders in order:

**Program Files > Corel > Corel Draw Graphics Suite X... > Draw > GMS**

**Note:** ... is determined by your version number.



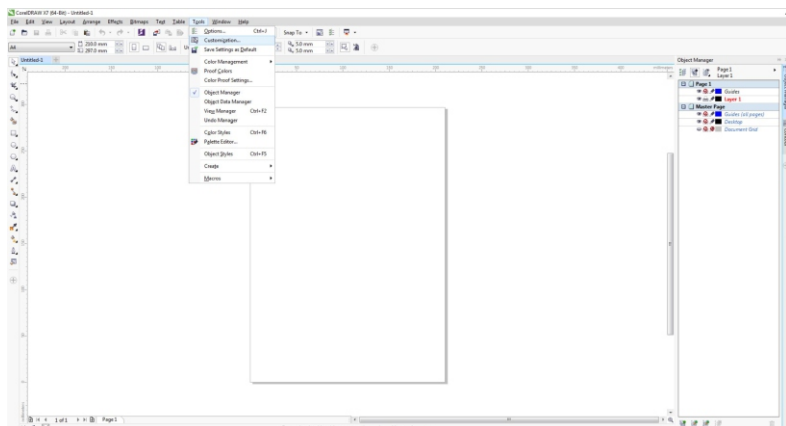
14. When you reach the GMS folder, paste (Ctrl + V) the files inside that you previously copied in point 10.

15. Open Corel Draw (or restart it if previously running) and create a new blank document.

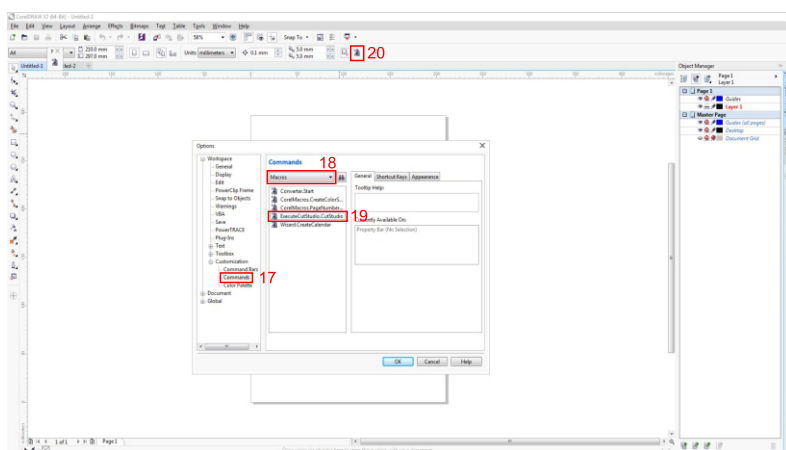


## Xpres Technical Services

# How to install the Roland Cut Studio Software & Plug-In for Corel Draw



16. Click on **Tools** and then **Customization**. A new window will open.



17. In the left margin, expand **Customization** and click on **Commands**.

18. In the Commands section, there will be a drop-down menu. Select **Macros** from within it.

19. An option called **Execute CutStudio** should now appear in the list below. If not, please recheck points 9-14 and restart Corel Draw again.

20. Click and drag the **Execute CutStudio** icon onto the top Corel Draw toolbar. It should now look something like the icon below.



21. Place a square into Corel Draw and click this icon. If it exports to the Cut Studio software, the installation process has been successfully completed!

22. Click on **Tools > Save Settings As Default** to permanently save your changes for future use.