



Xpres Technical Services

Roland GS-24 Print and Cut (Corel Draw)

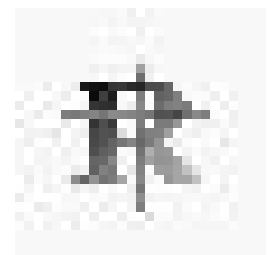
1. Open Corel Draw and place your artwork into the Xpres Cut Plus template. Ensure it sits within the black crop marks.

2. Print the artwork and crop marks. Do not add any cutlines at this stage.

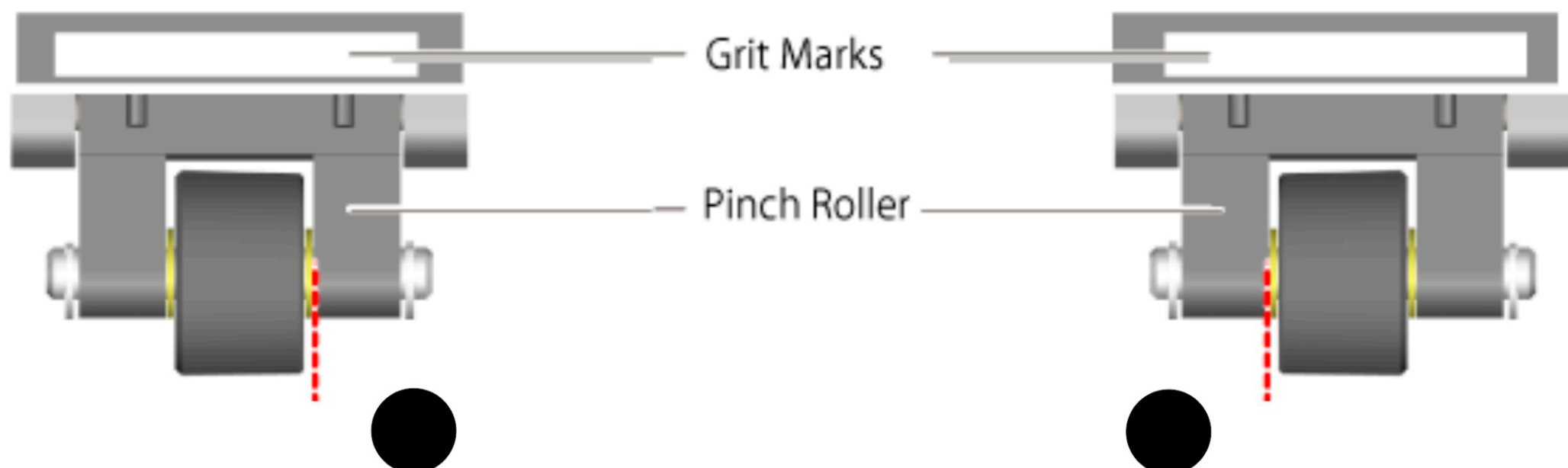


3. Create the cutlines as required and delete all artwork from within them. Do not remove the crop marks.

4. Export the cutlines and crop marks to Cut Studio. Click the Cut Studio Plug-In icon for this part. It should look like one of the icons shown to the right.



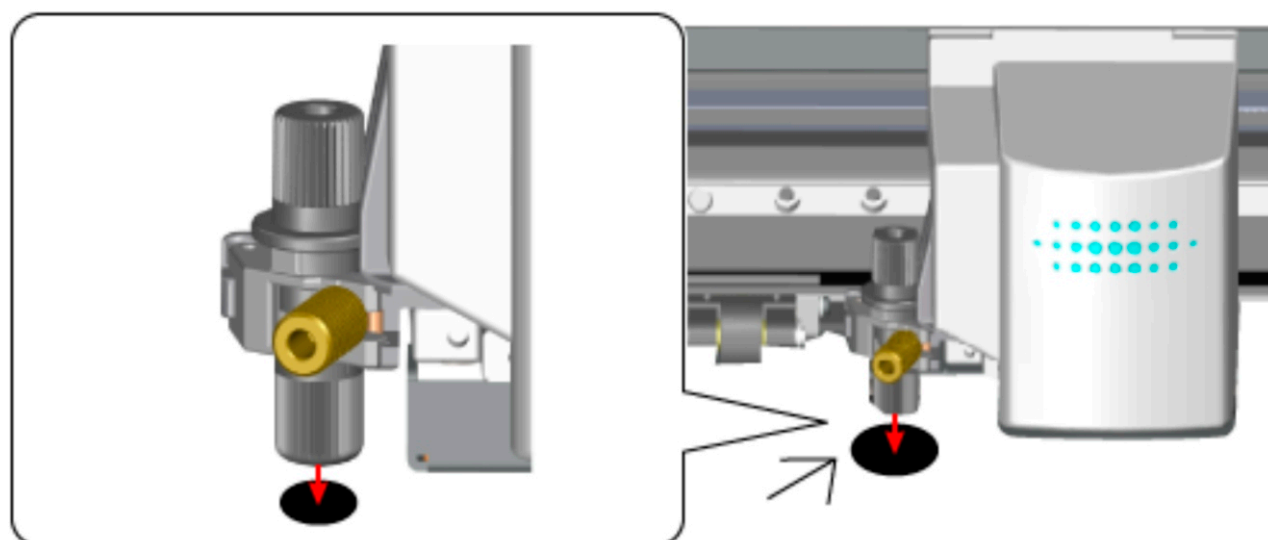
5. Place the printed sheet into the cutter. It must sit in portrait orientation with two crop marks positioned along the cutting strip. The pinch rollers should sit slightly outside the crop marks, as seen overleaf.



6. Raise the loading lever to secure the sheet. Now, select the type of material on the cutter's display (as shown to the right) and press Enter. The cutting head will now move into its starting position.

SELECT SHEET
*PIECE

7. Use the directional buttons to place the blade tip directly above the bottom left crop mark.



8. Press the Menu button twice (UNSETUP should appear on screen) then scroll down to CROPMARK and press the right directional button.

9. Scroll down to SENSOR MODE. Press Enter to select it this setting (a star should appear next to it). Press Menu to return to the main screen.

10. The artwork should automatically load into Cut Studio.

11. Once this process has finished, select File > Cutting Setup to load this settings window (A). Select the Roland GS-24 cutter from the specified drop-down menu and press Ok.

12. Select File > Print and Cut.

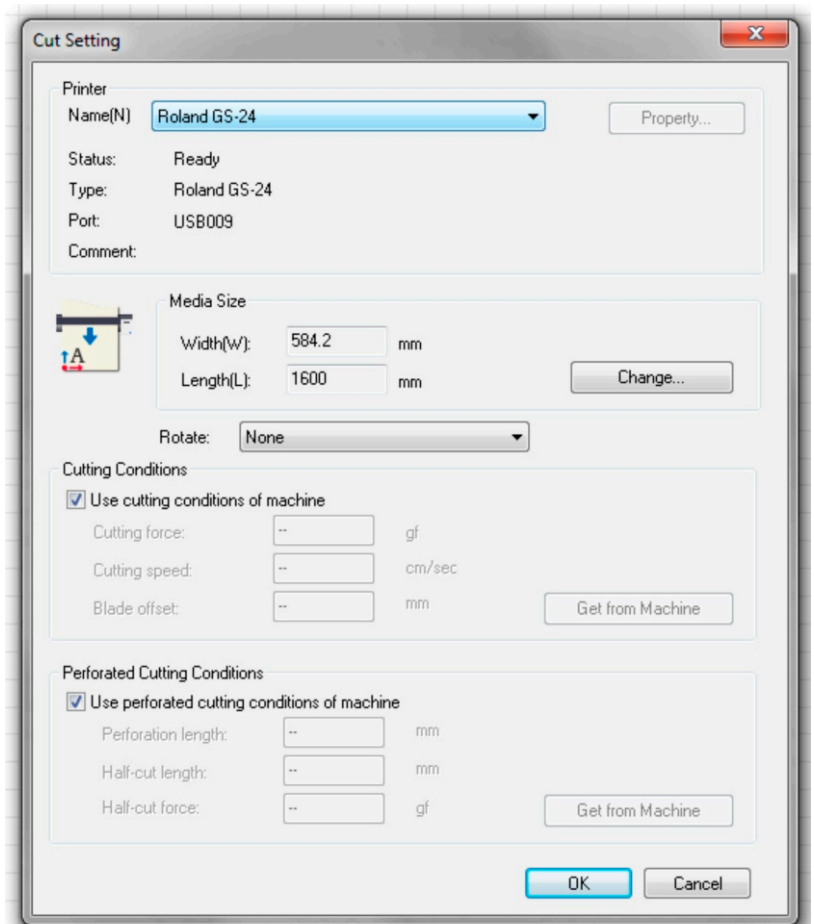
13. Select File > Printing Setup (this option should appear having completed step 12). Settings window B will appear.

14. Click on Set up the printer to load another small settings window (shown in C). Select the printer used (refer to step 7) and the paper size then click Ok.

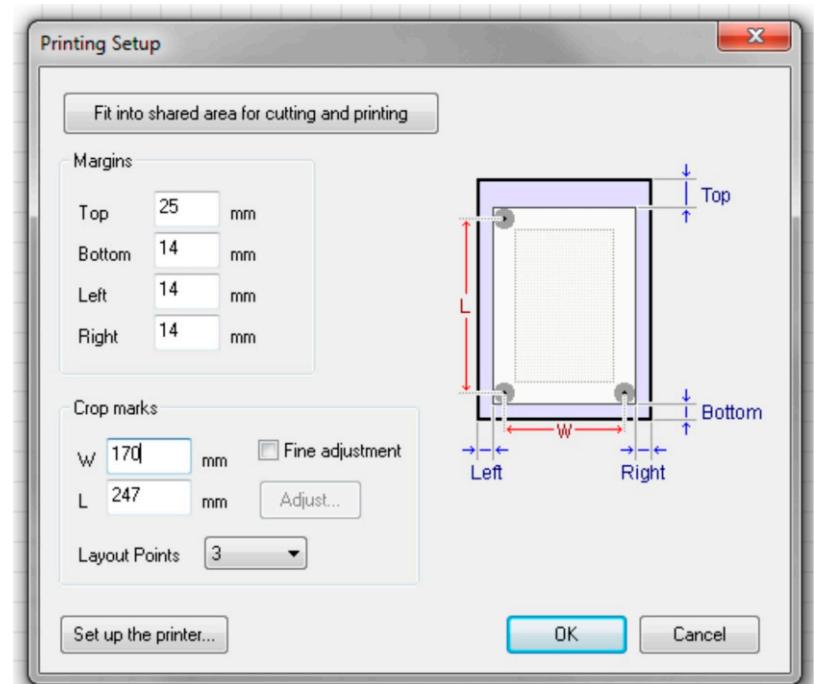
15. Returning to window B, choose 3 layout points and set the crop mark sizes appropriate to the paper size. Click Ok when this is complete.

Note: The software will sometimes automatically decrease these measurements to a lower value. If this happens, reduce the margin sizes.

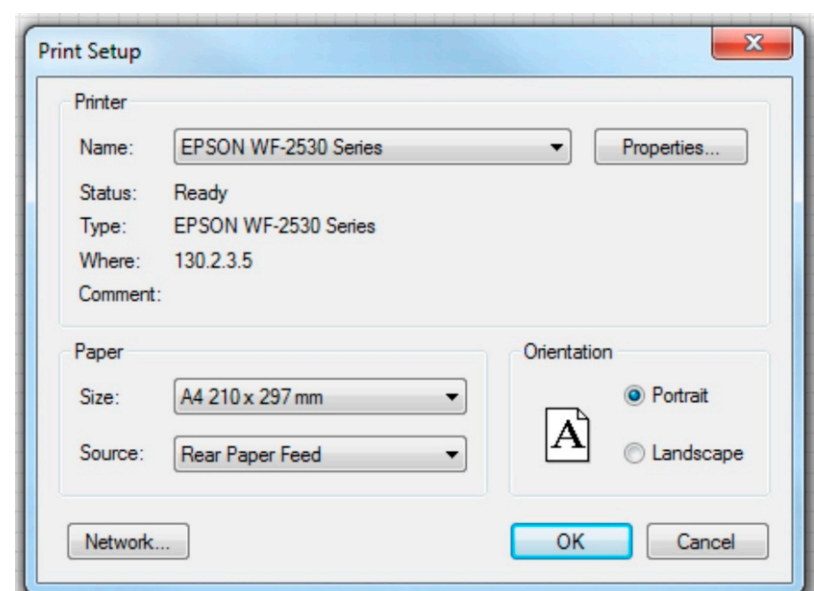
A



B



C

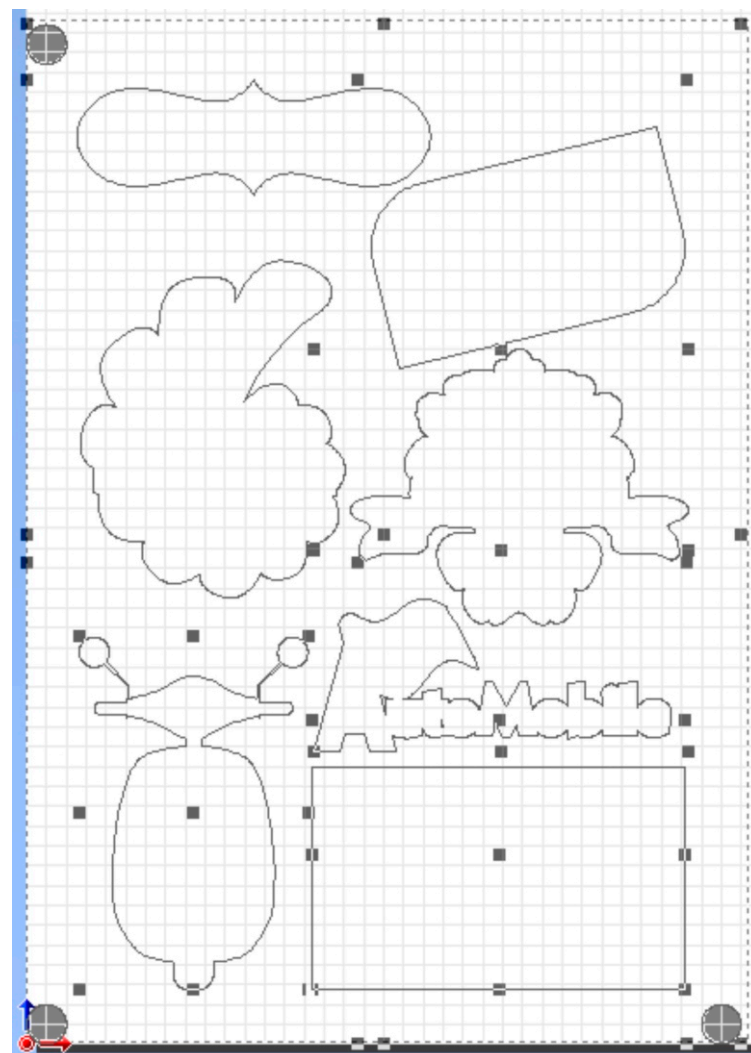




Xpres Technical Services

Roland GS-24 Print and Cut (Corel Draw)

16. The artwork should now be displayed on the main Cut Studio screen, as shown here.



17. Click on File > Cutting to display this window. The artwork should be displayed in the preview section.

18. Press Ok. The GS-24 will now automatically scan the crop marks and cut the artwork.

