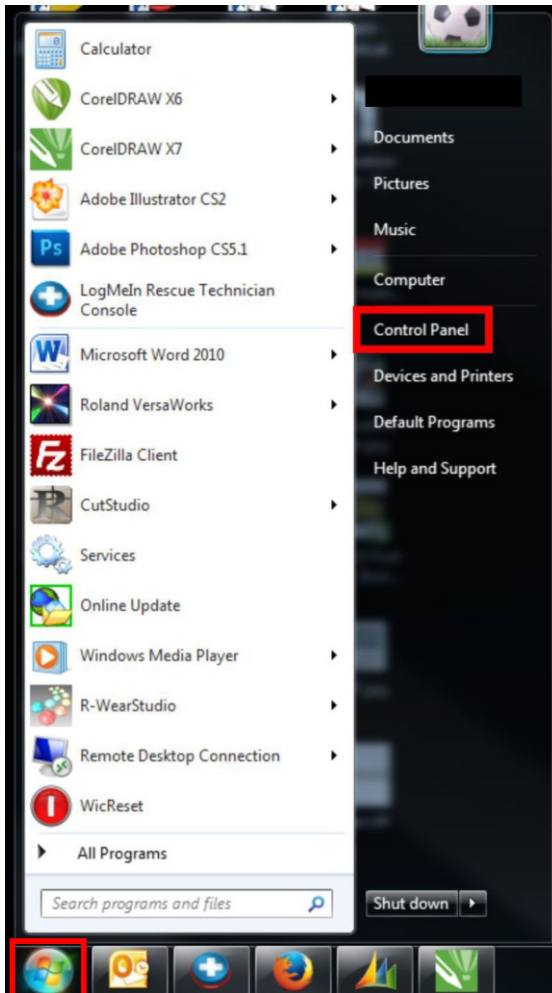


Versacamm Connection Procedure

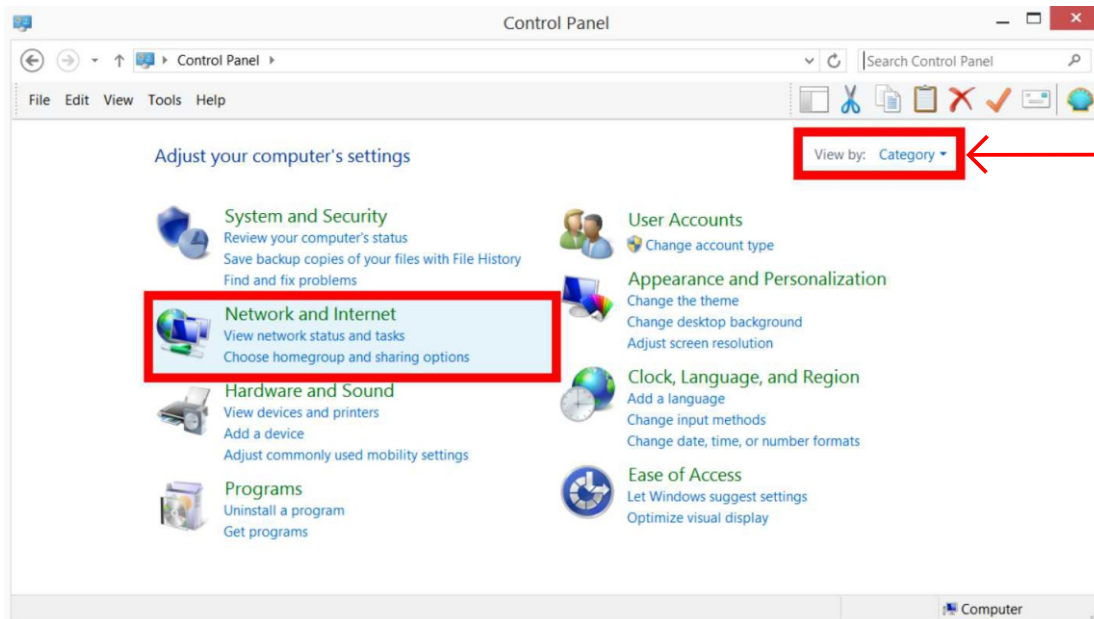


Direct Connection Windows 7



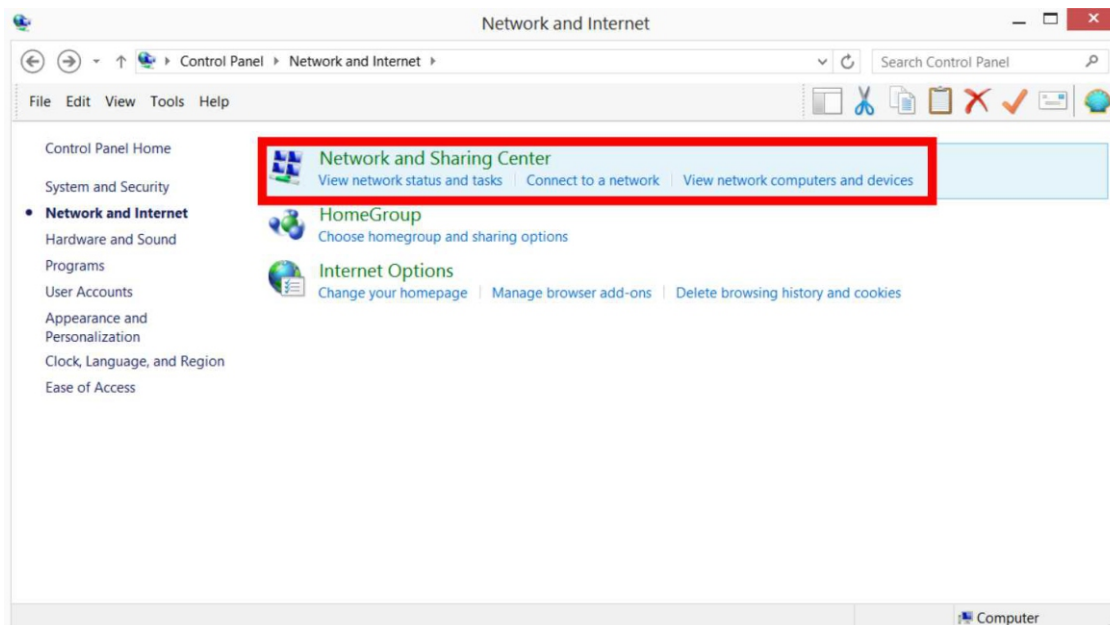
1. Access the **Start Menu** on your computer.

2. Open the **Control Panel**.

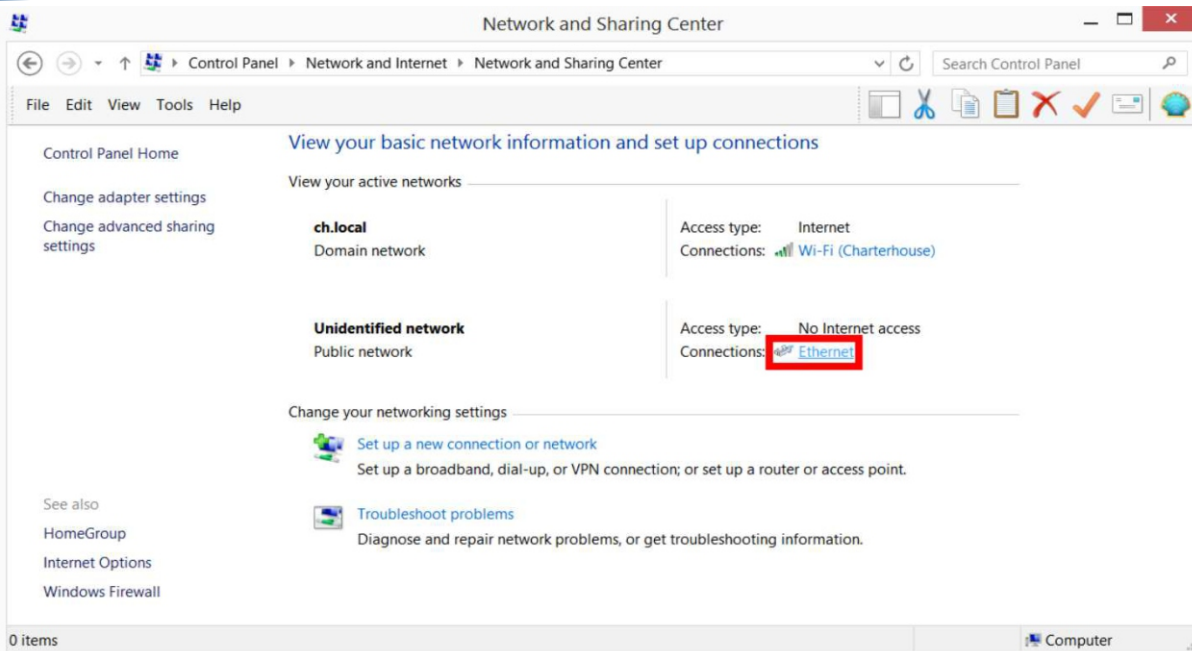


Note: If the **Network and Internet** option does not appear, select **Category** as shown.

3. Click on **Network and Internet**.

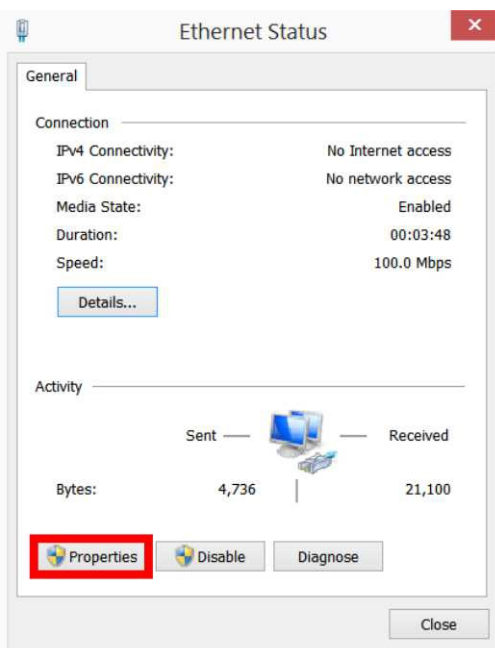


4. Click on **Network and Sharing Center**.

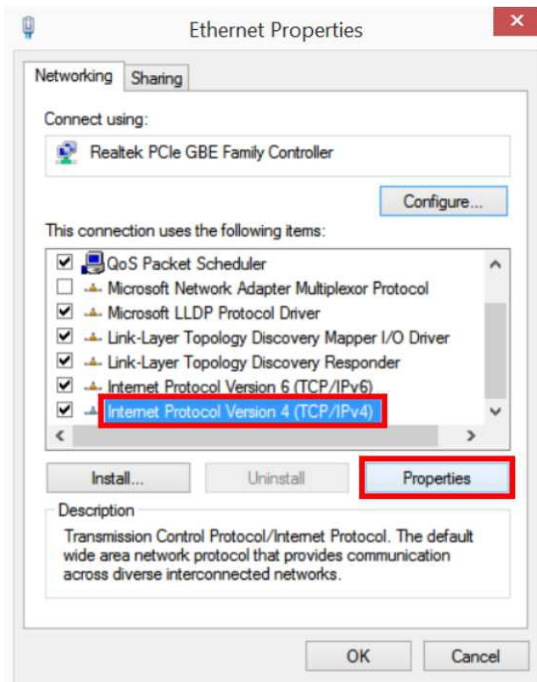


Note: to check the connection of your Versacamm, remove and reinsert the ethernet cable. It should disappear and reappear from the list in response.

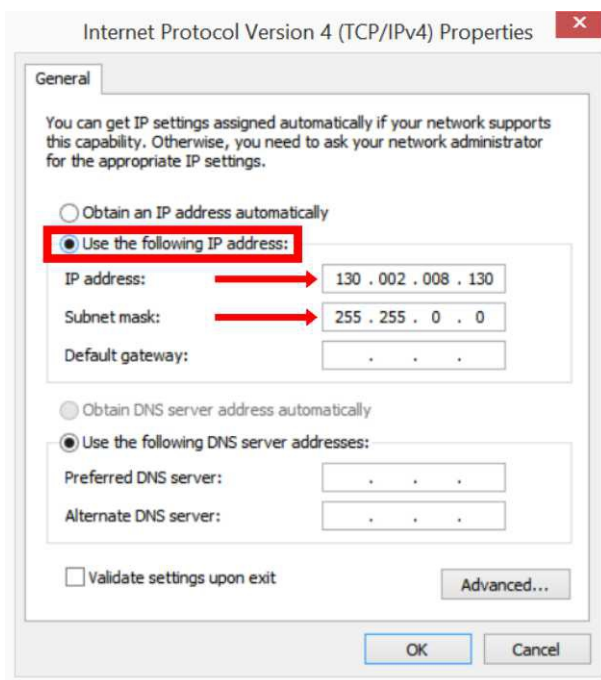
5. When your Versacamm is connected directly to a computer via an ethernet cable, it should appear in the list of network connections. Select the **Ethernet** link to continue or see the note above.



6. Click on **Properties**.



7. Click on **Internet Protocol Version 4 (TCP/IPv4)** and then select **Properties** below it.



8. Use the following **IP address** should now be selected.

9. Type an **IP address** where prompted. Choose numbers that are between 0 and 255.

10. Click on the box next to **Subnet Mask**. Numbers should now automatically appear in the gaps. Select **OK** to continue.

11. Record these numbers in a table as shown below, so the first numbers of each sit level with each other, and so on.

12. Return to the computer and press **OK** to save your changes.

IP Address	130	2	8	130
Subnet Mask	255	255	0	0

13. Turn on the Versacamm.

14. On the Versacamm control panel, find the options for **IP Address** and **Subnet Mask** by accessing their location:

Menu > System Info > Network >

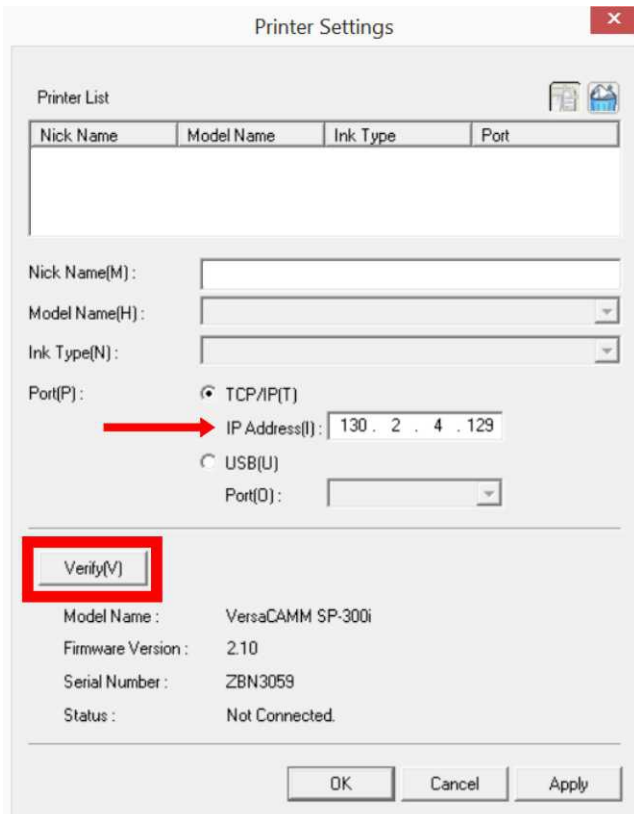


15. Set the Subnet Mask exactly as shown on your computer. Press **Enter** to save it.

16. Look at the IP Address in the table. Where there is a 255 below it, you must enter the same number in your Versacamm. Where there is a 0 below it, a different number must be entered.

In the example table, both 130 and 2 have a 255 below them. They have been entered identically in the Versacamm. However, 8 and 130 have 0 below them, so a different number was entered into the Versacamm.

17. Press **Enter** to confirm the changes and **Menu** to save them - 'Now Processing' should appear on the Versacamm screen.



18. Open Versaworks. When this is done for the first time, a window titled **Printer Settings** should automatically appear. If Versaworks has previously been used, this window can be accessed by selecting:

Printer > Printer Settings

19. In the **IP Address** box, enter exactly the same IP Address as you did in the Versacamm. **Do not enter the IP Address previously noted in the table.**

20. Click on **Verify** and the Versacamm information should be displayed. If so, click **OK** to proceed into the Versaworks main screen.

21. If the connection is not successful, **Initialize** (reset) and **Update** Versaworks before trying again. Both of these options can be found by accessing:

Start > All Programs > Roland Versaworks >

