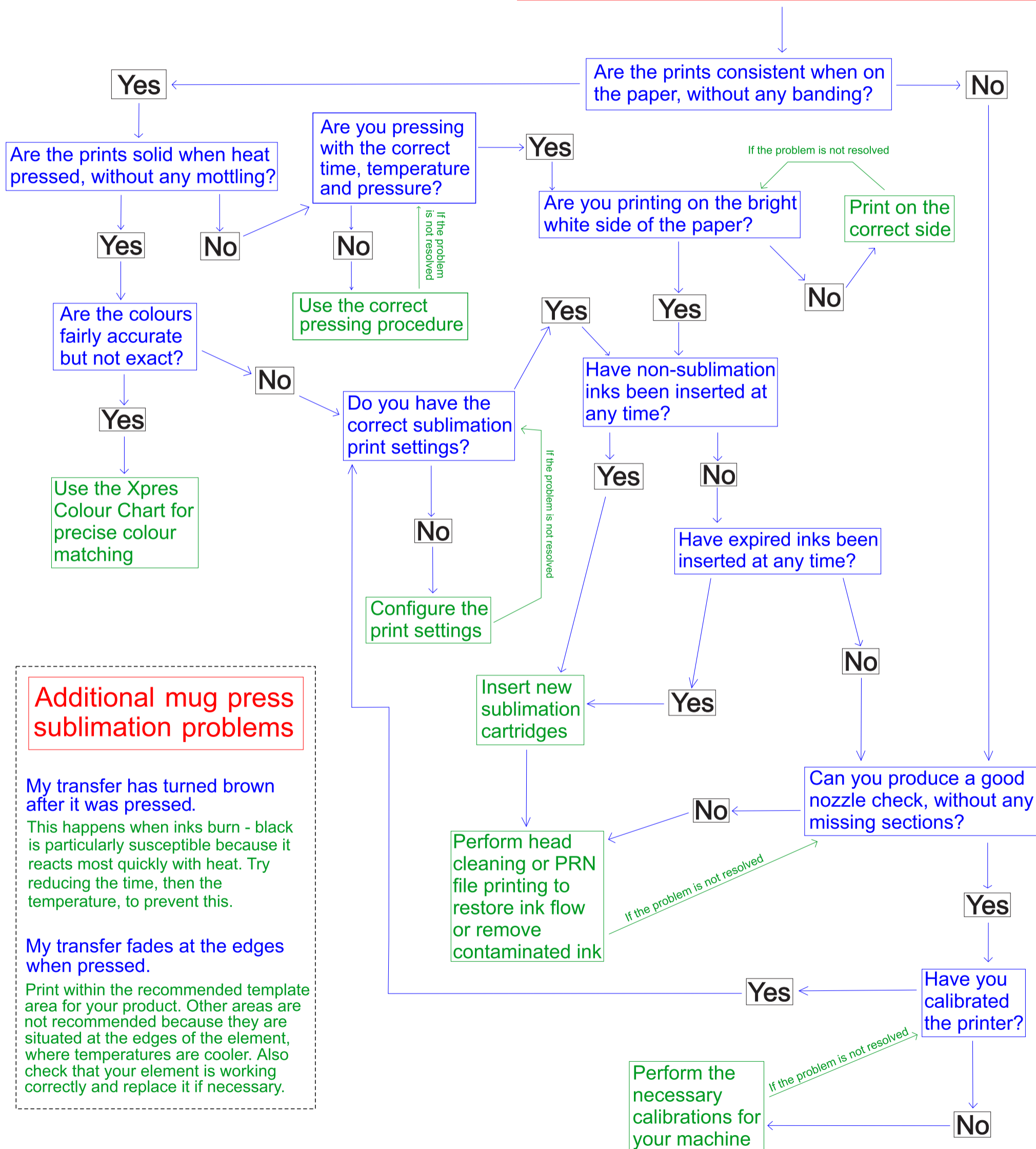




# Xpres Technical Services

## Diagnosing Sublimation Problems

I have a print quality problem



### Additional mug press sublimation problems

My transfer has turned brown after it was pressed.  
This happens when inks burn - black is particularly susceptible because it reacts most quickly with heat. Try reducing the time, then the temperature, to prevent this.

My transfer fades at the edges when pressed.  
Print within the recommended template area for your product. Other areas are not recommended because they are situated at the edges of the element, where temperatures are cooler. Also check that your element is working correctly and replace it if necessary.